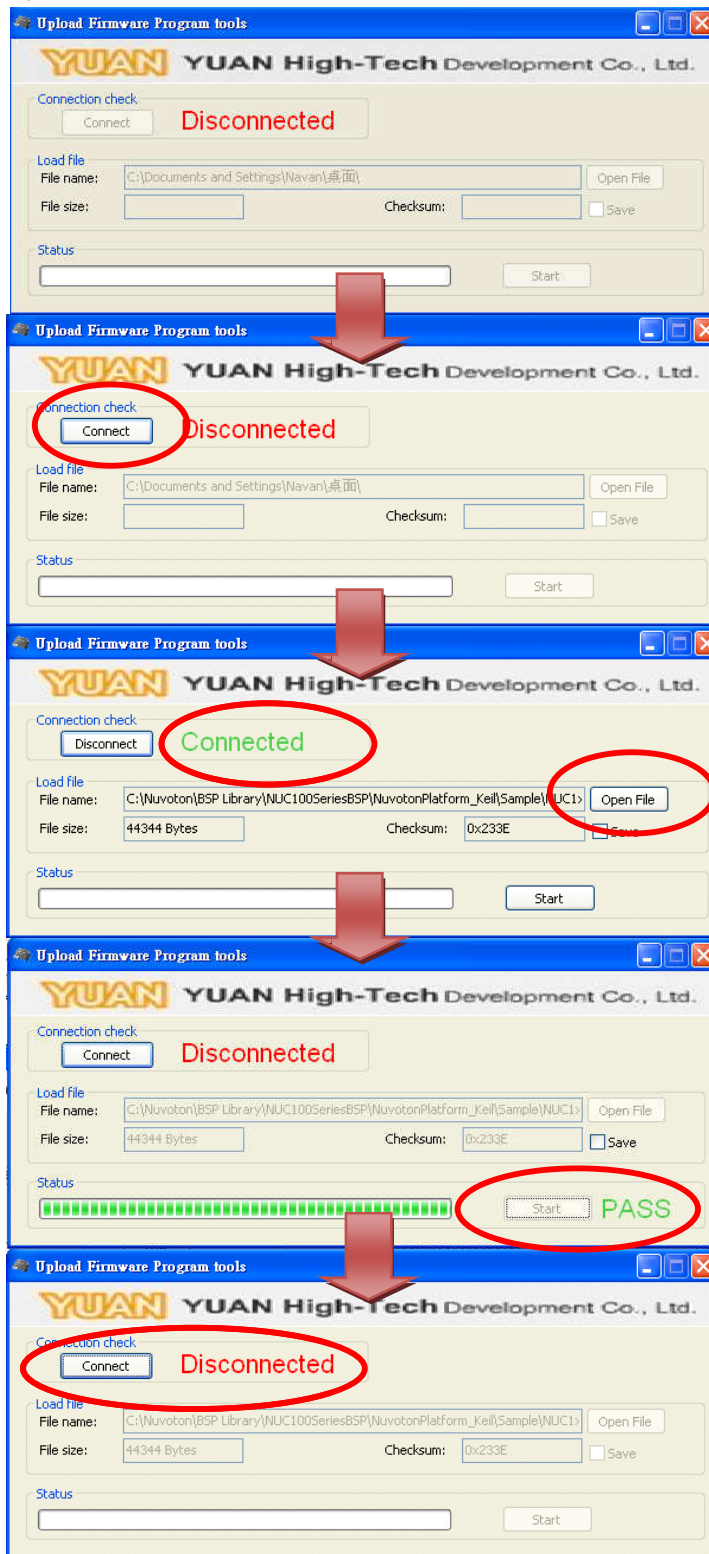


Upload Firmware :



1. Open Upload Firmware .exe
2. Connect Box to PC by USB Cable
3. Plug and Play "AC Power", Until Show the Connect

1. Plug and Play again. Auto connects to Box (Show "Connected" message)

1. Select Update Firmware Bin File (*.Bin)

1. Push "Start" Button.
2. Until show the "Pass" Message.

1. If it is burred Success, it will be auto Disconnected.